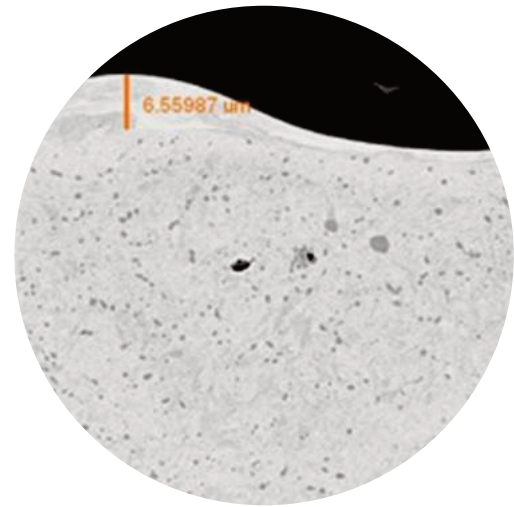


A New Era in Roll Texturing Technology



CDT

A unique Sarclad process of carbide deposition texturing (CDT), which extends the textured operational life of rolling mill work rolls.

- A superior texturing process compared to all other texturing technologies.
- Maintains all the characteristics of a standard EDT texture with the added benefit of providing a hardened, longer wearing textured layer.
- A patented process which eliminates the need for further roll processing after texturing.
- Roughness retention comparable to that of chrome plating.

Duplex

A superior Sarclad process of texturing which provides a textured negative skew (-Rsk) surface finish, essential to prolong the working life of finishing mill rolls.

- A fully automated parameter controlled process.
- An electrical, non-abrasive application.

- Avoids the introduction of undesirable micro scratches into the roll textured surface.
- Utilises existing Sarclad EDT machine hardware, no additional consumables required.



ROLLTEX



CONTACT

UK - Head Office

Sarclad Limited,
Advanced Manufacturing Park,
Whittle Way,
Rotherham,
S60 5BL,
United Kingdom.

Tel: +44 (0)114 293 9300 Fax:
+44 (0)114 293 9301 Email:
sales@sarclad.com

USA - Sales & Service

Sarclad North America,
317 East Carson Street,
Suite 241,
Pittsburgh,
PA 15219,
USA.

Tel: +1 412 466 2000 Fax:
+1 412 466 6330 Email:
sales@sarcladna.com

India - Sales & Service

Sarclad India,
S306, No. 7/48 Prestige Centre,
Point,
Dr AD Loganathan Road,
Bangalore, 560052,
India.

Tel: +91 080-22200051
Email: sarclad.india@sarclad.com

China - Sales & Service

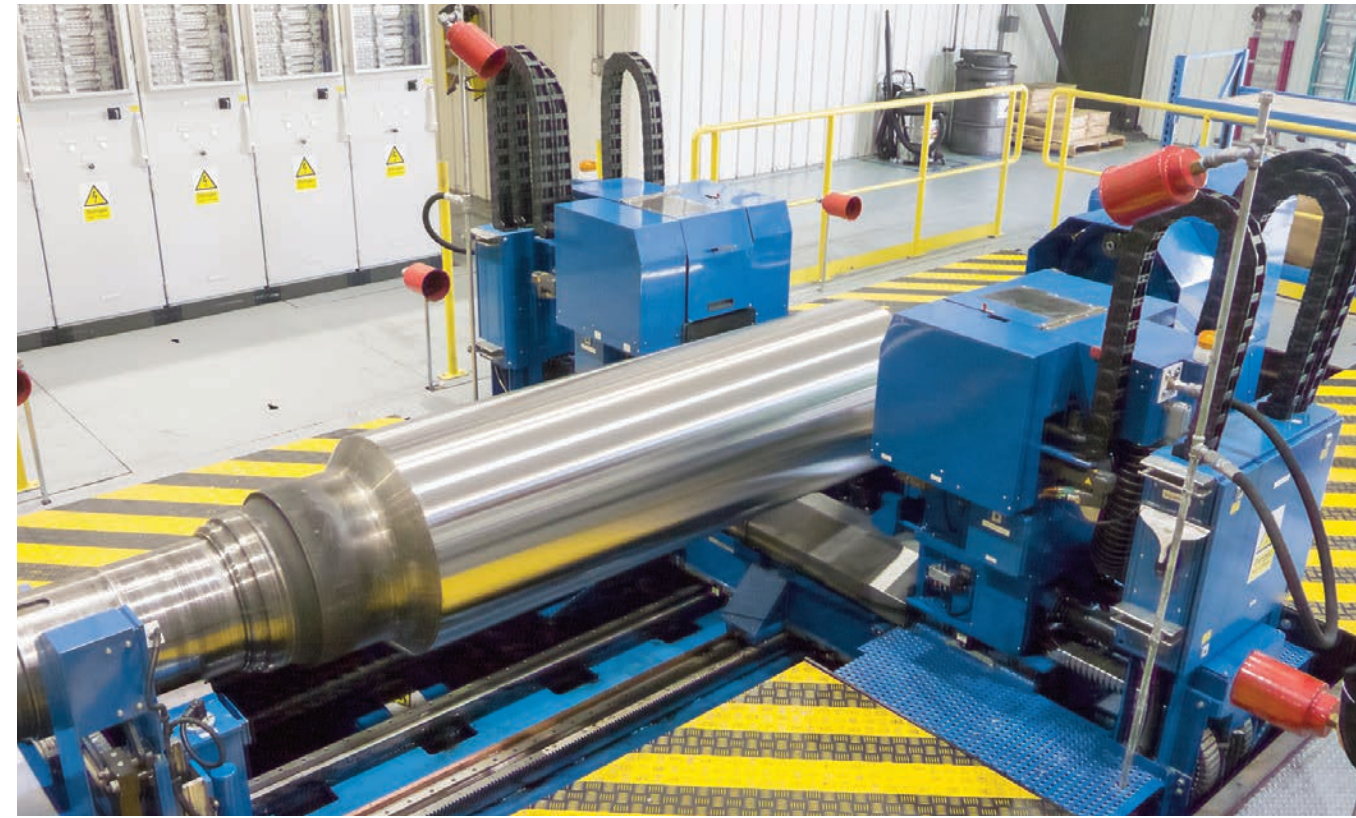
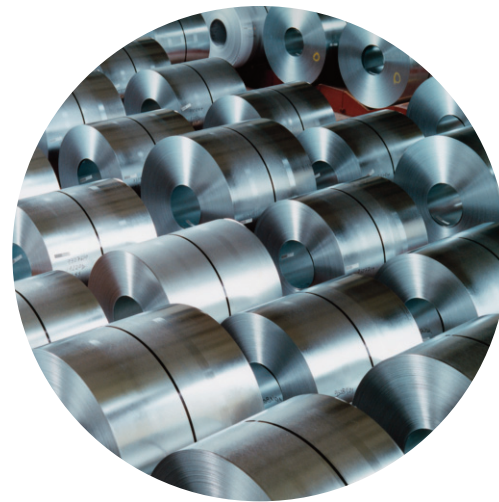
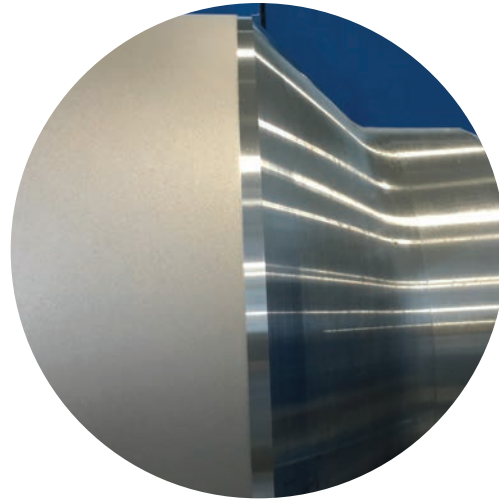
Sarclad China,
Room 205, B Block,
No. 2679 Hechuan Road,
Minhang District,
Shanghai, 201103
China.

Tel: +86 21 5438 8867
Fax: +86 21 5438 8807
Email: sales.china@sarclad.com

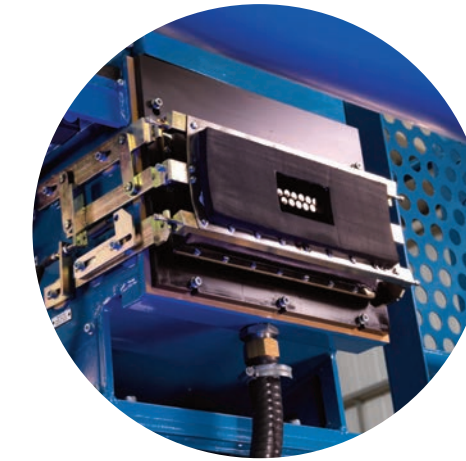
ROLLTEX

Roll texturing of mill work rolls for the Aluminium and steel industries producing high grade strip for exposed automotive and other high quality applications.

- Proven world leading technology.
- Approved by the leading automotive manufacturers.
- Full range of textures and refined surface finishes.
- Outstanding accuracy and consistency.
- Range of machines to suit every requirement and application.



- Sarclad EDT - World leading technology for texturing of cold mill and aluminium work rolls to outstanding accuracy and consistency for all automotive and goods in white end applications.
- Advanced Duplex texturing process for superior negative Skew (- Rsk) requirements.
- Roll texturing for PLTCM, Tandem, Temper, Skin pass, Sendzimir, Reversing mills and speciality strip applications.
- Advanced electronic control provides independent user programming for surface roughness (Ra), Peak Count (PC) and Skew (Rsk).
- Texturing for all roll sizes and shapes including parallel, CVC and cambered rolls.
- Texture ranges from Ra 0.5 to 14 μ m, independent of roll hardness.
- Fully automated roll loading and integration into Roll Shop Management Systems (RSMS) available.



Full range of machines for every customer and application

- Micro Cluster Mill Rolls, - Z Mill
- EDT Eco Low Volume, - Aluminium
- EDT12 Low Volume, - Aluminium & CC lines
- EDT24 Low / Med Volume, - Cold Mill
- EDT36 Med Volume, - Cold Mill
- EDT48 Med / High Volume, - Cold Mill
- EDT72 High Volume, - Large PLTCM

Rolltex ECO

High quality texturing for low volume requirements. The preferred industry solution for Aluminium and low volume steel mills.

- High quality repeatable texturing results.
- Affordable, high-tech solution for smaller capacity requirements.
- No compromise on texturing quality or performance.
- No foundations or civil works required.
- Fast project turnaround ensures quicker investment realisation.